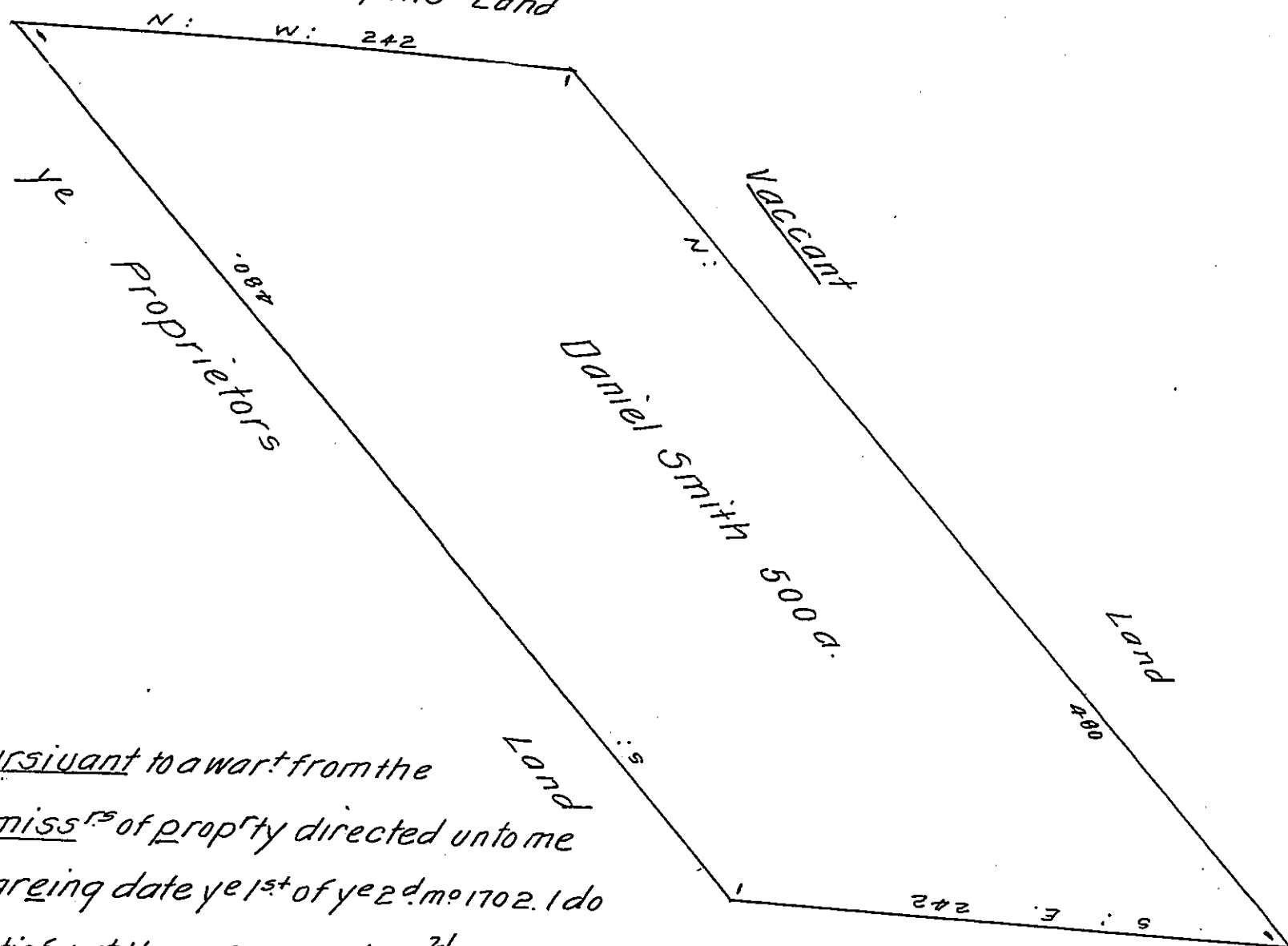


Reputed Silas Crispins Land



Pursuant to a warrant from the
 Comiss^{rs} of prop^{ty} directed unto me
 bearing date ye 1st of ye 2^d mo 1702. I do
 Certief y^t I have surveyd ye 2^d of ye 3^d mo 1703 unto Vaccant Land
 Randl Spickman in Right of Daniel Smith a Certaine tract of Land Reputed to
 be in ye County of Philladelphia begining at a Stak-by a Hickry Sapline marked
 being a Corner of a tract of Land Laid out for Silas Crispin. from thenc-by the
 said Land North West 242 perches to a Stak-Set in ye ground in ye said Crisp-
 ins Reputed Line. thenc-by a Line of trees and Vaccant Land North 480 perches
 to another Stak-Set in ye ground Neere a W^{ote} marked from thenc-by Vaccant Land
 South East by a Line of marked trees 242 perches to another Stak-by blak. oke
 marked. from thenc-by a Line of trees marked deviding it from ye Proprietors
 Land South 480 perches to ye plac-of begining. Containeing 500 accrs of Land
 and is according to ye bounds above described. Return'd into ye General
 Survey^{rs} Offic-at Philladelphia ye 14: day of ye 4th mo 1703

Pr. David Powell. —

IN TESTIMONY that the above is a copy of the original remaining on file in
 the Department of Internal Affairs of Pennsylvania, made
 conformably to an Act of Assembly approved the 16th day of
 February, 1833, I have hereunto set my Hand and caused
 the Seal of said Department to be affixed at Harrisburg,
 this twenty eighth day of December 1909.

Henry Houck
 Secretary of Internal Affairs.